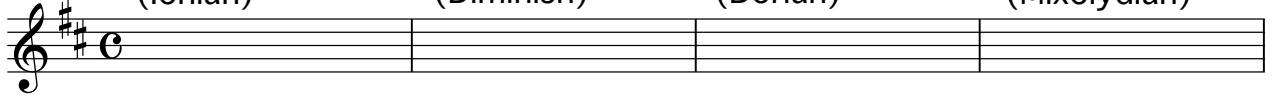


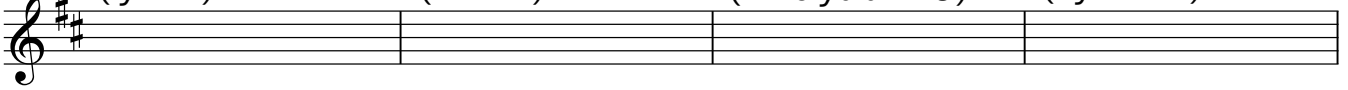
WAVE

Jobim

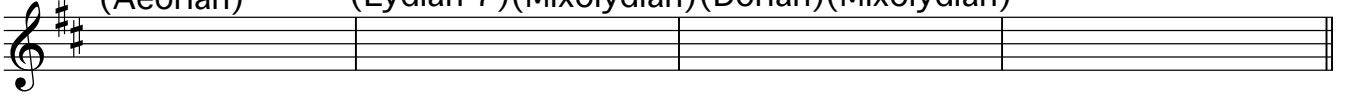
DMaj7 (Ionian) B^bdim (Diminish) Am7 (Dorian) D7 (Mixolydian)



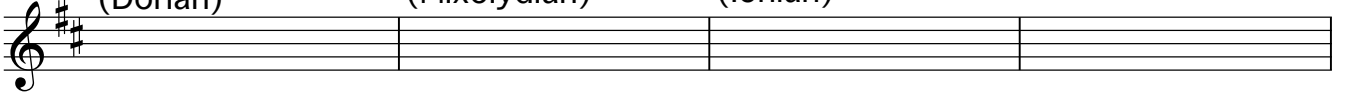
GMaj7 (lydian) Gm6 (Dorian) F#7 (Mixolydian^b13) B7 (Lydian^b7)



Bm7 (Aeorian) B^b7 (Lydian^b7) A7 (Mixolydian) Dm7 (Dorian) G7 (Mixolydian) Dm7 G7



Gm7 (Dorian) C7 (Mixolydian) FMaj7 (Ionian)



Fm7 (Dorian) B^b7 (Mixolydian) E^bMaj7 (Ionian)



D Ionian

B^b Combination of Diminishi



A Dorian

D Mixoldian



G Lydian

G Dorian



F# Mixolydian(^b13)

B Lydian^b7

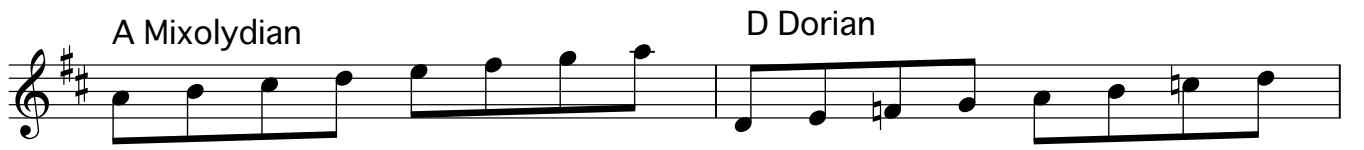


B Aeolian B^b Lydian^b7



The first staff shows two scales in treble clef with a key signature of two sharps (D major). The first scale, B Aeolian, starts on B4 and consists of the notes B, C, D, E, F, G, A. The second scale, B^b Lydian^b7, starts on B4 and consists of the notes B, C, D, E, F, G, A^b, B^b.

A Mixolydian D Dorian



The second staff shows two scales in treble clef with a key signature of two sharps (D major). The first scale, A Mixolydian, starts on A4 and consists of the notes A, B, C, D, E, F, G. The second scale, D Dorian, starts on D4 and consists of the notes D, E, F, G, A, B, C.

G Mixolydian G Dorian




The third staff shows two scales in treble clef with a key signature of two sharps (D major). The first scale, G Mixolydian, starts on G4 and consists of the notes G, A, B, C, D, E, F. The second scale, G Dorian, starts on G4 and consists of the notes G, A, B^b, C, D, E, F.

C Mixolydian F Ionian



The fourth staff shows two scales in treble clef with a key signature of two sharps (D major). The first scale, C Mixolydian, starts on C4 and consists of the notes C, D, E, F, G, A, B. The second scale, F Ionian, starts on F4 and consists of the notes F, G, A, B, C, D, E.

F Dorian B^b Mixolydian



The fifth staff shows two scales in treble clef with a key signature of two sharps (D major). The first scale, F Dorian, starts on F4 and consists of the notes F, G, A, B, C, D, E. The second scale, B^b Mixolydian, starts on B4 and consists of the notes B, C, D, E, F, G, A.

E^b Ionian



The sixth staff shows one scale in treble clef with a key signature of two sharps (D major). The scale, E^b Ionian, starts on E4 and consists of the notes E, F, G, A, B, C, D.